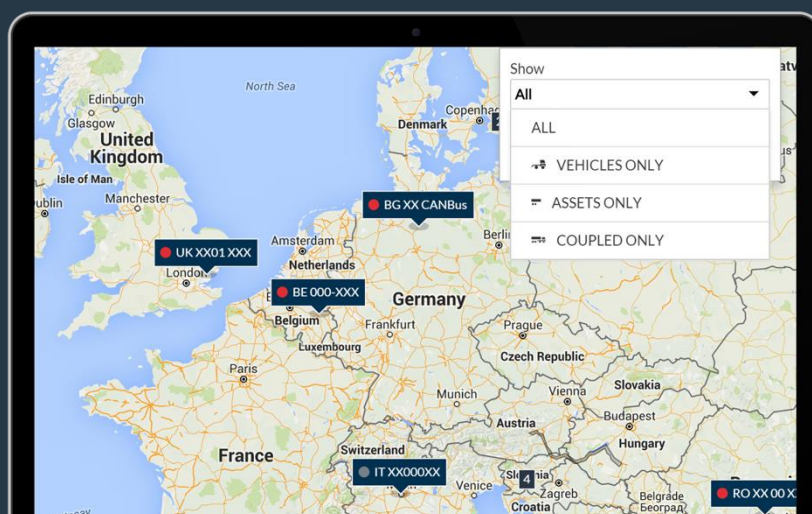


GPS trailer and asset tracking

Control your trailers, containers and other assets with automatic detection of coupling and uncoupling.

Frotcom is a professional, intelligent fleet management solution, designed to control your fleet's activities. We haven't forgotten about your assets either. Frotcom is prepared to provide you with solutions to **track and monitor your valuable trailers and other assets**.

Your fleet manager hangs up the phone after a long talk with yet another driver. He turns to you with a nod, confirming what you already suspected. There is a semitrailer missing.



How we help

Stories like the one above are not unheard of. Unless you have a tracking system to monitor your trailers and assets, sooner or later there's a chance someone will forget to register where a semi-trailer was uncoupled from a truck.

That's why many companies need not only to control their vehicles but also other valuable assets, such as semi-trailers, containers, swap bodies, or freight wagons.

Usually, these assets rely on an attached vehicle to communicate their location and other activities through the vehicle's GPS tracker.

However, when you need to control these assets on their own, often there are no external power sources available nearby.

That is where Frotcom comes in. Our trailer tracking devices can work with their internal batteries for months, even when no external power is available.

Frotcom's state-of-the-art technology also informs you when tractors and semitrailers are coupled or decoupled without any additional hardware. You will know where each semi-trailer is when it was left there, by which driver and tractor. You will keep track of its mileage too. Temperature and door open sensors are also available, optionally.

Benefits

Improve visibility and accountability of trailers and assets in the supply chain

Minimize the risk of losing an asset and its contents.

Recover stolen assets

By tracking your assets, you have a better chance of recovering stolen property.

Streamline your trailer operations

Improve trailer utilization and reduce dwell time.

Reduce labor costs and human error with automatic detection of coupling/uncoupling

Don't simply rely on your memory to track down assets manually. Frotcom can automatically detect when and where the trailer has been coupled/uncoupled to a tractor.

Improve rental utilization

If you have a heavy machinery rental business, you need to be able to confirm the whereabouts of your assets to confirm compliance with the rental contract.

"Frotcom is helping us to monitor our trailers while improving the transport process to the clients and ensuring that drivers are arriving on time."

Arian Qamili
Sales Representative at Sharrcem
Kosova

How it works

For asset tracking, Frotcom uses autonomous GPS trackers, with ultra-high capacity cell batteries, allowing them to work long periods of time without external power.

When tracking your trailers and assets in Frotcom, you will be informed automatically of all coupling and uncoupling operations.

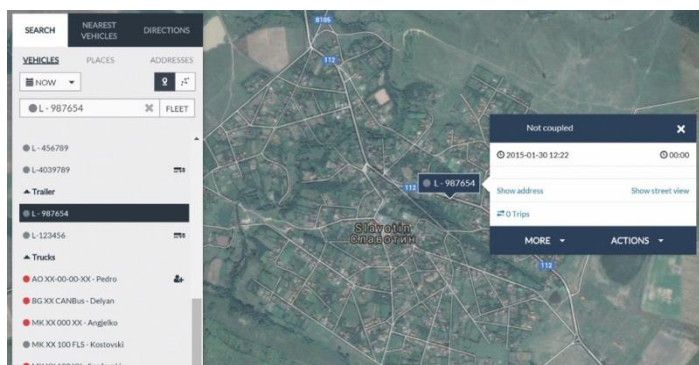
To use the automatic detection of coupling and uncoupling in Frotcom you need to allow automatic coupling based on GPS and define which vehicles and trailers will be using this feature.

Frotcom will then monitor their GPS position and detect coupling and uncoupling operations without the need for drivers to report them.

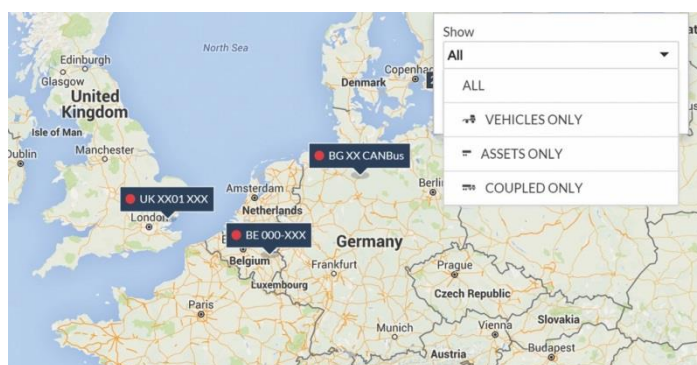
The result of automatic coupling and uncoupling is shown on Frotcom in the same way as the manual operations.

Frotcom supports Coupling and Uncoupling operations of up to 5 assets simultaneously to the same vehicle.

Tracking of a trailer



Tracking of vehicles, trailers and assets



Devices and accessories

Model: Quedlink - GV620MG (4G)

This GPS tracking unit delivers a simple and cost-effective solution for tracking trailers. Where there is no external power for a long time, low-frequency tracking can be set. In cases where the unit can be powered up during trips, from the tractors' main battery, or the cooling engine in reefer semi-trailers, tracking is available every minute. You can also attach door open sensors or connect any digital input signal (e.g. panic button).

Model: Picotrack Endurance Primary

This GPS tracking unit has been specifically designed for the tracking of assets where no power sources are available at all, such as containers.

The battery can last for years as long as positions are sent once a day or only when start and end of movement are detected.

Other related features you might be interested in

- GPS vehicle tracking and sensor monitoring
- Vehicle access control system
- Fleet Management reports
- Fleet alarms

THE INTELLIGENT
FLEET MANAGEMENT
FOR YOUR COMPANY.

WWW.FROTCOM.COM

FROTCOM
INTELLIGENT FLEETS